

Helifab
1318 Smede Hwy
Broussard, LA 70518
HF-206-FMS-001, Rev. 4

FAA APPROVED

ROTORCRAFT FLIGHT MANUAL SUPPLEMENT

FOR

BELL HELICOPTER TEXTRON CANADA
LIMITED MODEL:

206L-1, L-3, L-4 and 407 HELICOPTERS


WITH

HELIFAB LITTER INSTALLATION

REG NO. _____ SERIAL NO. _____

This supplement must be attached to the FAA Approved Rotorcraft Flight Manual when the Helifab litter is installed in accordance with Supplemental Type Certificate Number STC SR09441RC.

The information herein supplements or supersedes the information in the FAA Approved Rotorcraft Flight Manual only in those areas contained herein. For limitations, procedures, and performance information not contained in this supplement, consult the FAA Approved Rotorcraft Flight Manual.

FAA APPROVED: 
DATE APPROVED: May 12, 2017

MANAGER
FORT WORTH AIRCRAFT CERTIFICATION OFFICE
FEDERAL AVIATION ADMINISTRATION
FORT WORTH, TEXAS 76177

Issue Date: May 8, 2017

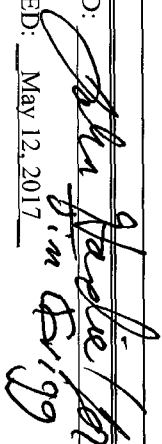
Helifab
1318 Smede Hwy.
Broussard, La 70518
HF-206-FMS-001, Rev. 4

RFMS to
Bell 206L-1, 206L-3, 206L-4 and 407
Helifab Litter Installation
STC No. SR09441RC

LOG OF REVISIONS

Revision	Issue Date:
Original	August 5, 2005
Rev 1	March 09, 2009
Rev 2	October 07, 2009
Rev 3	June 23, 2016
Rev 4	May 8, 2017

Page	Revision
1 thru 15 (ALL)4

FAA APPROVED: 
DATE APPROVED: May 12, 2017

MANAGER
FORT WORTH AIRCRAFT CERTIFICATION OFFICE
FEDERAL AVIATION ADMINISTRATION
FORT WORTH, TEXAS 76177

Issue Date: May 8, 2017

NOTE: Revised text is indicated by a black vertical line. Removed text may not be noted. Insert latest revision pages; dispose of superseded pages.

Helifab
1318 Smede Hwy.
Broussard, La 70518
HF-206-FMS-001, Rev. 4

RFMS to
Bell 206L-1, 206L-3, 206L-4 and 407
Helifab Litter Installation
STC No. SR09441RC

TABLE OF CONTENTS

<u>SECTION</u>	<u>Page</u>
LOG OF REVISIONS.....	2
TABLE OF CONTENTS.....	3
INTRODUCTION	4
<u>Part I FAA APPROVED SECTION:</u>	
SECTION 1 - LIMITATIONS.....	5
SECTION 2 - NORMAL PROCEDURES	15
SECTION 3 - EMERGENCY/MALFUNCTION PROCEDURES..	15
SECTION 4 - PERFORMANCE DATA.....	15
SECTION 5 - WEIGHT AND BALANCE	15

Helifab
1318 Smede Hwy.
Broussard, La 70518
HF-206-FMS-001, Rev. 4

RFMS to
Bell 206L-1, 206L-3, 206L-4 and 407
Helifab Litter Installation
STC No. SR09441RC

INTRODUCTION

The litter installation is installed on the left hand side of the aircraft in the area formerly occupied by the co-pilot seat and aft facing left hand passenger seat. In all models the litter attaches to the aircraft through the use of an aluminum honeycomb litter board that travels fore and aft approximately 14 inches. Roller assemblies attach to the left hand kick panel and left hand aft facing seat kick panel. The stretcher lock is located on the aft outboard side of the litter board. The litter board travel release is located on the aft edge of the litter board. In all models, a cutout is made to the skin behind the location of the removed co-pilot seat.

Section 1

LIMITATIONS

PASSENGER LOAD

When this litter kit is installed, the maximum passenger load is limited to three (3) (including patient).

COPLOT CYCLIC AND COLLECTIVE CONTROLS

The copilot cyclic and collective controls must be removed and stowed when this litter kit is installed.

CENTER OF GRAVITY LIMITS

Aircraft empty weight shall be determined from the most current weight and balance information and after the passenger cabin seating kits and rescue equipment have been either installed or removed. Ballast requirements shall be determined and the aircraft ballasted, as required, to return the aircraft to within empty weight CG limits as published in the applicable Rotorcraft Flight Manuals.

It shall be the responsibility of the pilot to ensure that the helicopter is properly loaded so that the entire flight is conducted within the limits of longitudinal gross weight (GW) center of gravity and lateral center of gravity charts in the applicable Rotorcraft Flight Manual Supplement. Gross weight and center of gravity may be calculated from the helicopter actual weight record and loading tables or in accordance with applicable Rotorcraft Flight Manual Supplements (RFMS) to assure safe loading.

Helifab
1318 Smede Hwy.
Broussard, La 70518
HF-206-FMS-001, Rev. 4

RFMS to
Bell 206L-1, 206L-3, 206L-4 and 407
Helifab Litter Installation
STC No. SR09441IRC

DOORS

For installations in eligible Bell 206L series models, only left hand passenger door assemblies listed below are to be used with the installation of P/N 2511-1 and 2521-1 equipment transport litters.

Acceptable Left Hand Passenger Door Assembly P/N:

206-033-601-013
206-033-601-087
206-033-601-117
206-033-601-133
206-033-601-137
206-033-601-157
206-033-601-147

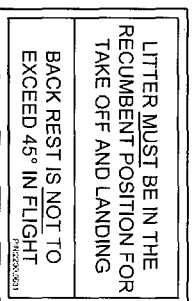
INCUBATOR LITTERS (P/N 2511-1 and 2521-1):

For litter part number 2511-1 and 2521-1 only, the litter must be in the full aft position for use to allow the passenger seat belt to wrap around the aft end of the litter.

PLACARDS

(Placards shown are not to scale)

Decal Part Number 2200.0031 is located on the left hand side of the vertical control tube tunnel. This placard installed only when litter assembly part number 2501-1 or 2501-2 is installed.



Helifab
1318 Smede Hwy.
Broussard, La 70518
HF-206-FMS-001, Rev. 4

RFMS to
Bell 206L-1, 206L-3, 206L-4 and 407
Helifab Litter Installation
STC No. SR09441RC

Decal Part Number 2200.0032 is located on left hand side of vertical control tube tunnel. This placard installed only when litter assembly part number 2501-1 or 2501-2 is installed.

PATIENT MUST BE
SECURED BY ATTACHING
UPPER RESTRAINTS
UNDER PATIENTS ARMS
ACROSS CHEST AREA FOR
TAKE OFF AND LANDING
P/N:2200.0032

Decal Part Number 2200.0037 is located on left hand side of vertical control tube tunnel. This placard installed only when litter assembly part number 2501-3 is installed.

LITTER BACKREST NOT TO EXCEED 30° FROM
HORIZONTAL DURING TAKEOFF & LANDING
BACK REST IS NOT TO EXCEED 45° IN FLIGHT
P/N:2200.0037

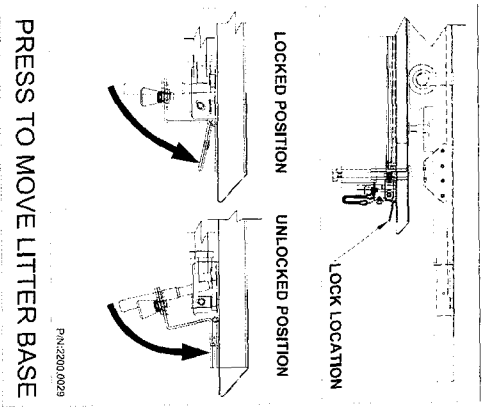
Decal Part Number 2200.0042 is located on left hand side of vertical control tube tunnel. This placard installed only when litter assembly part number 2501-3 is installed.

PATIENT MUST BE SECURED FOR
TAKEOFF AND LANDING
P/N:2200.0042

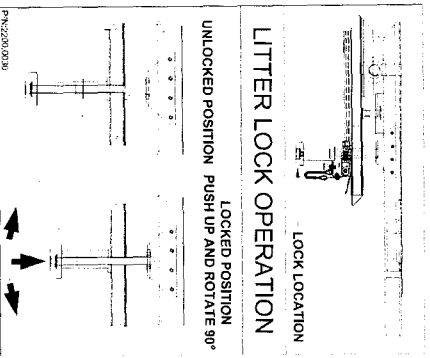
Heifab
1318 Smede Hwy.
Broussard, La 70518
HF-206-FMS-001, Rev. 4

RFMS to
Bell 206L-1, 206L-3, 206L-4 and 407
Heifab Litter Installation
STC No. SR09441RC

Decal Part Number 2200.0029 is located on the top of the litter board assembly and on the inside of the litter door.



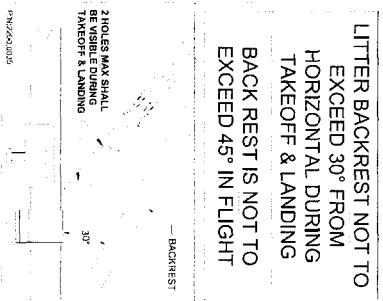
Decal Part Number 2200.0030 is located on the top of the litter board assembly and on the inside of the litter door.



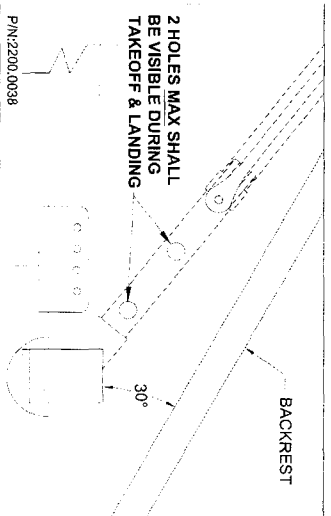
Helifab
1318 Smede Hwy.
Broussard, La 70518
HF-206-FMS-001, Rev. 4

RFMS to
Bell 206L-1, 206L-3, 206L-4 and 407
Helifab Litter Installation
STC No. SR09441RC

Decal Part Number 2200.0035 is located on the litter board. This placard installed only when litter assembly part number 2501-3 is installed.



Decal Part Number 2200.0038 is located on left hand side of vertical control tube tunnel. This placard installed only when litter assembly part number 2501-3 is installed.



Helifab
1318 Smede Hwy.
Broussard, La 70518
HF-206-FMS-001, Rev. 4

RFMS to
Bell 206L-1, 206L-3, 206L-4 and 407
Helifab Litter Installation
STC No. SR09441RC

Decal Part Number 2510.0023 is located on the litter tube on the left hand aft corner, 2 places. This placard installed only when litter assembly part number 2511-1 is installed.



Decal Part Number 2510.0024 is located on the top of litter part number 2511-1. This placard installed only when litter assembly part number 2511-1 is installed.

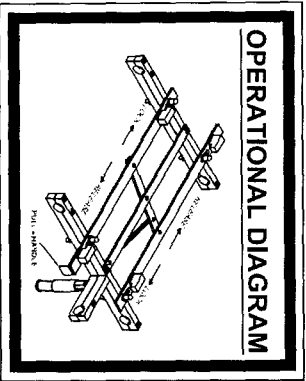
WARNING

IT IS THE RESPONSIBILITY OF THE OPERATOR TO ENSURE THAT ANY EQUIPMENT TRANSPORTED ON THIS MOUNT DOES NOT AFFECT THE AIRCRAFT WEIGHT AND BALANCE. THE WEIGHT AND BALANCE OF THE AIRCRAFT WHICH COULD INCLUDE EMERGENCY EQUIPMENT, MUST BE MAINTAINED AT ALL TIMES. (SHARP OBJECTS ON EQUIPMENT ARE TO BE PROPERLY PROTECTED TO PREVENT OCCUPANT INJURY). LOADS ON ANY EQUIPMENT TRANSPORTED ON THIS MOUNT SHOULD BE EVALUATED PER THE GUIDANCE CONTAINED IN AC 135.14A AND RESTRICTED TO THE EMERGENCY LANDING LOAD FACTORS FOR ROTORCRAFT OCCUPANTS PER 14 CFR 27.261 (b)(3) AND 27.274.

STRUTTER DECK MUST BE IN THE FULL UP POSITION AND LOCK STANDBY MUST BE FULLY ENGAGED IN THE DOWN POSITION FOR EQUIPMENT MOUNT USE.

ENSURE THAT EQUIPMENT MOUNT LOCKING MECHANISM IS FULLY ENGAGED IN THE LOCK POSITION BEFORE OPERATIONAL USE.

Decal Part Number 2510.0025 is located on the top of litter part number 2511-1. This placard installed only when litter assembly part number 2511-1 is installed.



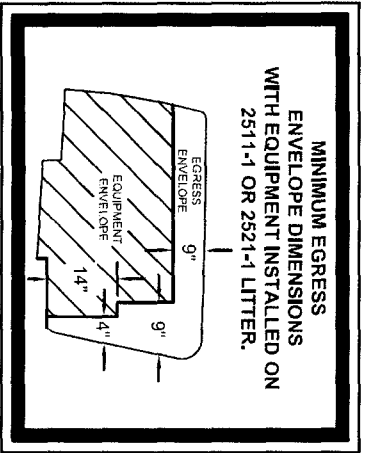
Helifab
1318 Smede Hwy.
Broussard, La 70518
HF-206-FMS-001, Rev. 4

RFMS to
Bell 206L-1, 206L-3, 206L-4 and 407
Helifab Litter Installation
STC No. SR09441RC

Decal Part Number 2510.0026 is located on litter part number 2511-1 top side. This placard installed only when litter assembly part number 2511-1 is installed.



Decal Part Number 2510.0030 is located on the left hand forward facing passenger seat. This placard installed only when litter assembly part number 2511-1 or 2521-1 is installed.



Decal Part Number 2510.0029 is located on left hand side litter part number 2511-1. This placard installed only when litter assembly part number 2511-1 is installed.



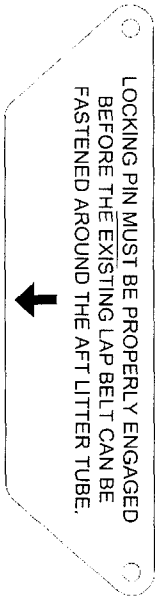
Helifab
1318 Smede Hwy.
Broussard, La 70518
HF-206-FMS-001, Rev. 4

RFMS to
Bell 206L-1, 206L-3, 206L-4 and 407
Helifab Litter Installation
STC No. SR09441RC

Decal Part Number 2520.0015 is located on the top of litter 2521-1 shelf. This placard installed only when litter assembly part number 2521-1 is installed.

MAX WEIGHT 25LBS.

Decal Part Number 2520.0018 is located on left hand side litter part number 2511-1 and 2521-1. This placard installed only when litter assembly part number 2511-1 or 2521-1 is installed.



Decal Part Number 2520.0019 is located on left hand side litter part number 2521-1. This placard installed only when litter assembly part number 2521-1 is installed.

PART #
2521-1

Section 2

NORMAL PROCEDURES

NO CHANGE TO BASIC ROTORCRAFT FLIGHT MANUAL

Section 3

EMERGENCY/MALFUNCTION PROCEDURES

NO CHANGE TO BASIC ROTORCRAFT FLIGHT MANUAL

Section 4

PERFORMANCE

NO CHANGE TO BASIC ROTORCRAFT FLIGHT MANUAL

Section 5

WEIGHT AND BALANCE

SEE MANUFACTURER'S DATA